

E50z | E55z | E60

COMPACT EXCAVATORS 0-1 1-2 2-3 3-4 **4-6** 6-10



One Tough Animal

INTRODUCTION

ONE TOUGH ANIMAL

► OUR MISSION

We empower operators to accomplish more, while working in the toughest conditions and tightest situations. When our customers have the will, we provide the way.



► BOBCAT'S HISTORY

In 1958, Melroe Manufacturing Company introduced a compact front-end loader that evolved quickly into the M400, the world's first true skid steer loader. The company soon adopted what became the world-famous 'Bobcat' brand – and its success paved the way for the global compact equipment industry we know today.

► INNOVATION CENTER IN DOBŘÍŠ

New technologies and machines are rigorously tested to take on the toughest jobs.



► BOBCAT TODAY

Since developing compact excavators with Zero-House-Swing functionality in 1984, Bobcat has continued to innovate. Today, our equipment is known for providing all the power you need, where you need it, without any hassle.



PRECISION EVEN AT FULL POWER

► PERFORMANCE MEETS COMFORT

Bobcat's compact excavators are built around the operator and provide the solution to all of your business requirements by successfully blending high performance with smooth, intuitive controls and first-class comfort.



► SUPERIOR CONTROLLABILITY
Intuitive, personalizable controls make the workgroup feel like an extension of your hands.



► CONFIDENCE-BOOSTING STABILITY
You can rely on 360° stability in any situation, even when digging over side or handling heavy loads.



► PERFORMANCE & PRODUCTIVITY
The pure digging power gets the job done at unmatched speed, whether it's heavy digging or fast trenching.



► MULTI-TOOL VERSATILITY
Transport and use multiple tools with ease thanks to up to 5 AUX lines and an A-SAC option.

PERFORMANCE

► SMOOTH OPERATION

An exceptional combination of signature Bobcat high performance, best-in-class controllability and intuitive controls now meets a state-of-the-art hydraulic system for unmatched precision and reduced fuel consumption.

► DEPENDABLE ENGINES

Time-proven Bobcat D18 and D24 engines – used in thousands of Bobcat machines worldwide – now in a new Stage V compliant version with improved performance characteristics.



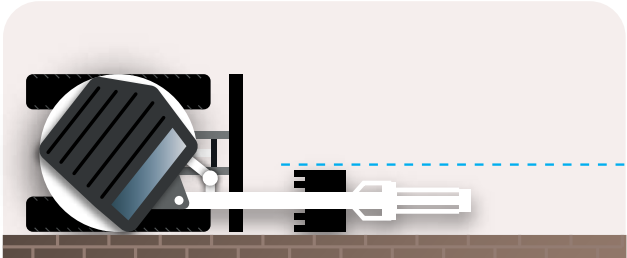
POWER WHERE YOU NEED IT

► ZERO HOUSE SWING – E50z, E55z

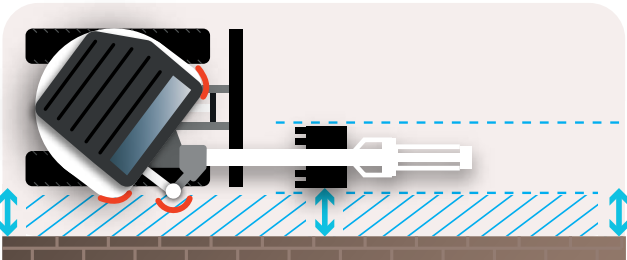
The Bobcat Zero House Swing (ZHS) concept enhances Zero Tail Swing (ZTS) functionality, allowing operators to work in extreme proximity to walls. The design protects the front upper-structure corners turning within the swing circle and eliminates the protrusion of the boom swing cylinder during parallel digging.

► RIGHT TOOL FOR THE JOB

Professionals know the value of matching their equipment to the work at hand. Bobcat's lineup includes a range of options to meet the needs of every job. While conventional models feature low overhang over the track profile, Zero House Swing models eliminate overhang altogether.



Zero House Swing (ZHS)



Zero Tail Swing (ZTS)

STEP INSIDE



► ALL-DAY COMFORT

Enjoy ample space and leg room inside the cab, ergonomic interior design, easy access to critical controls and optional comfort features such as a heated seat with high back and head rest.



► TOUCH CONTROLS



Optional 7-inch touch screen with Bluetooth, hands-free calling and media streaming. Automatically switching to Dark Mode in low light.

► FULLY AIR CONDITIONED



Stay comfortable in any weather thanks to automatic air conditioning.

► STORAGE FOR ESSENTIALS



Smart interior design with dedicated holders and storage for everyday items.



BUILT TO LAST

► ENGINEERED TO PERFECTION

Feel the superior fit and finish of the exterior, covers, cab, controls and workgroup down to the last bolt and screw. Heavy-duty counterweight and side channels add even more protection for all other components.

► HASSLE-FREE MAINTENANCE

Thanks to easily accessible maintenance points, easy-to-replace wear parts, and extended service intervals (the first necessary after 500 hours), taking care of your Bobcat excavator is as simple as it gets.



► MACHINE IQ

BOBCAT® Machine IQ Wireless Communications enhances the support for your Bobcat machine.

- Durable built-in monitoring electronics
- Data is available to our machine monitoring specialist
- Maintenance is optimized for your business
- Data-driven services maximize uptime

► STANDARD WARRANTY

Bobcat Company develops every machine to the highest standards of quality and durability. That's why our standard warranty provides 24 months or 2 000 operating hours (whichever occurs first) of coverage.

**THERE'S NO TIME
FOR DOWNTIME.
STAND UP TO THE
HARSHEST CONDITIONS.
DAY AFTER DAY.**



► PROTECTION PLUS EXTENDED WARRANTY

Enjoy total peace of mind with Protection Plus® extended warranty. Providing the same level of protection as the standard warranty, Protection Plus also reflects different customer needs and expectations by offering a choice of durations and annual operating hours. According to your needs, you can benefit from the coverage for up to 5 years or 6 000 engine hours. And Protection Plus is transferrable – so it will likely increase your machine's resale value.



► BOBCARE

A long-running machine starts with proper planned maintenance. And it helps protect against repair costs and sudden failures when you're counting on your machine to work.

- Avoid risk by preventing major repairs and complete failures.
- Accomplish more by reducing downtime and increasing your productivity and profitability.



E50z

► COMPACT YET POWERFUL

This compact, light and affordable compact excavator packs a surprising punch with plenty of power and Zero House Swing.



E55z

► SUPERIOR PERFORMANCE

Bobcat's largest compact excavator with Zero House Swing represents a step up in stability and power, with an optional long arm for greater working range.



CHOOSE YOUR ANIMAL

E60

► MAXIMUM POWER AND COMFORT

The flagship E60 offers the highest performance, stability and comfort, with the biggest cab in its category and a powerful 55 hp engine.



► CONQUER EVERY CHALLENGE



STANDARD EQUIPMENT



FOR ALL MACHINES

- 1 960 mm dozer blade
 - 2-speed travel with auto shift
 - 5-inch display
 - Auto idle
 - Adjustable double acting auxiliary hydraulic (AUX1) with QC on arm
 - Battery disconnect switch
 - Blade float feature
 - Clamp ready
 - Control console locks
 - Cupholders
 - Dual direction detent
 - Engine/hydraulic monitor with shutdown
 - Foldable and ergonomic pedals
 - Full fuel warning alarm
- Horn
 - Hydraulic joystick controls
 - LED work lights
 - Machine IQ (telematic)
 - Proportional fingertip auxiliary and boom swing offset hydraulic control
 - Retractable seat belt
 - Selectable auxiliary hydraulic flow
 - Suspension seat with high back
 - Storage compartment
 - Tool box
 - TOPS/ROPS/FOPS cab*
 - Upper structure tie down
 - Warranty: 24 months, 2000 hours (whichever occurs first)

FOR E50z

- 350 mm tracks

FOR E55z, E60

- 400 mm tracks
- Dual flanged rollers

OPTIONS

PERSONALIZE YOUR MACHINE

Sometimes, we all want to add a specific functionality or a personal touch to the machine. Choose from a comprehensive list of options and customize your compact excavator to your heart's content!



1st AUX hydraulic on arm 2nd AUX hydraulics with drain line 7-inch display



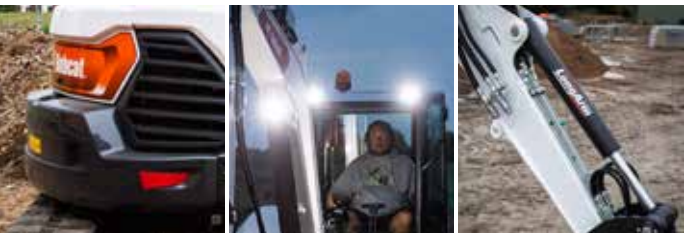
Add on counterweight Angle blade Auto A/C



Beacon with rear light Bluetooth MP3 radio Clamp with AUX1 diverter



Deluxe textile suspension seat Electric re-fill pump Fire extinguisher



Heavy counterweight LED lights set Long dipperstick



Steel tracks Segmented tracks TOPS/ROPS/FOPS cab with heater

OPTIONS	E50z	E55z	E60
Add-on counterweight			•
Angle blade		•	•
Auto track tensioning	•	•	•
AUX1 direct return to tank	•	•	•
AUX2 hydraulics	•	•	•
Beacon	•	•	•
Bluetooth MP3 radio	•	•	•
Bucket valves (AUX3) kit	•	•	•
Case drain line	•	•	•
Clamp with AUX1 valve	•	•	•
Comfort package cab (Auto HVAC, 7" touch display)		•	•
Deluxe textile suspension seat	•	•	•
Depth check kit	•	•	•
Fire extinguisher	•	•	•
Heated seat with headrest	•	•	•
Hydr. coupler lines (AUX5)	•	•	•
Keyless ignition	•	•	•
L/R mirrors	•	•	•
Long dipperstick with add-on counterweight			•
Long dipperstick with heavy counterweight		•	
Object handling package (valves, OWD, lifteye)	•	•	•
Rear LED light	•	•	•
Re-fill pump			•
Segmented tracks		•	•
Special application kit	•	•	•
Steel tracks	•	•	•
Tilt coupler lines (AUX4) with SAC	•	•	•
Travel motion alarm	•	•	•

*Roll Over Protective Structure (ROPS) – Meets requirements of ISO 3471.
Tip Over Protective Structure (TOPS) – Meets requirements of ISO 12117.
Falling Object Protective Structure (FOPS) - Meets requirements of ISO 3449.

MULTI-TOOL CARRIER

▶ BOBCAT ATTACHMENTS

Get more versatility and efficiency with Bobcat attachments and tools.

- The largest choice of attachments in the industry
- Match performance to your Bobcat machine
- Work harder with stronger components and construction.
- Rest easy with the 12-month warranty on every genuine Bobcat attachment.



Breakers



Flail mower

Actual attachment compatibility may vary based on different machine configurations. Contact your dealer for actual attachment compatibility.

▶ ATTACHMENTS

General

- Augers
- Breakers
- Flail mowers
- Hydraulic clamp
- Laser equipment
- Plate compactor
- Rotary grinder

Buckets

- Clay spade buckets
- Digging buckets
- Grading buckets
- Skeleton buckets
- Tilt buckets

Couplers

- Bobcat hydraulic pin grabber
- Hydraulic coupler (HS03)
- Hydraulic coupler (HS03) with tilt function
- Klac coupler model E
- Mechanical coupler (MS03)
- Mechanical coupler (MS03) with tilt function



Hydraulic clamp



Tilt buckets



Skeleton buckets



Clay spade buckets



Augers



Pin grabber



Tilt coupler



Plate compactor

MULTI-TOOL CARRIER



▶ VERSATILITY

Up to 5 independent hydraulic auxiliary circuits:

- AUX1 – general purpose
- AUX2 – supporting functions (rotation)
- AUX3 – clam shell bucket (bucket diverter)
- AUX4 – tilting coupler control
- AUX5 – hydraulic coupler control

New 'Selectable Auxiliary Control' (SAC) system allows control pattern customization and optimal attachment fit (integral part of AUX4 option).



Selectable
Auxiliary
Control

SPECIFICATIONS

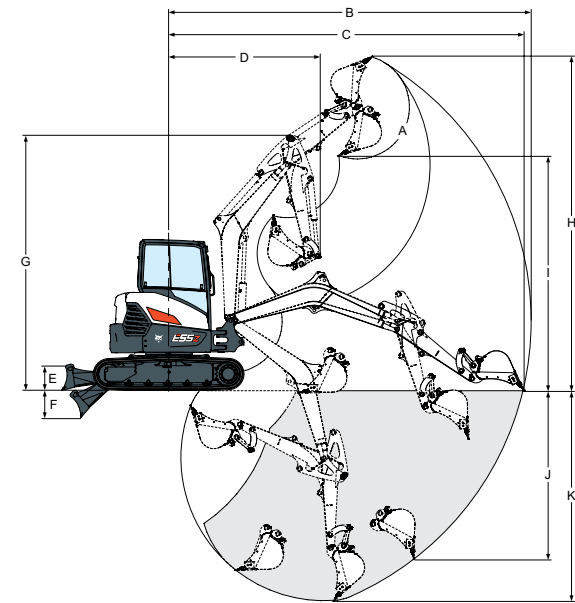
SPECIFICATIONS			
	E50z	E55z	E60
WEIGHTS			
Operating weight	4 975 kg	5 346 kg	5 589 kg
Additional weight for cab with HVAC	19 kg	19 kg	19 kg
Additional weight for long dipperstick		229 kg*	21 kg
Additional weight for additional counterweight			239 kg
Additional weight for angle dozer blade		176 kg	176 kg
Additional weight for steel tracks	125 kg	125 kg	125 kg
Ground pressure with rubber tracks	35.41 kPa	30 kPa	31.8 kPa
ENGINE			
Make / model	Bobcat 1.8 L, 97/68 EC Stage V	Bobcat 1.8 L, 97/68 EC Stage V	Bobcat 2.4 L, 97/68 EC Stage V
Fuel	Diesel	Diesel	Diesel
Number of cylinders	3	3	4
Displacement	1.79 l	1.79 cm³	2.39 cm³
Maximum net power (ISO 9249)	31.3 kW	36.4 kW	41 kW
Maximum net torque (ISO 9249)	155 Nm	180 Nm	190 Nm
HYDRAULIC SYSTEM			
Pump type	Single outlet variable displacement piston pump with gear pumps		
Piston pump capacity	99 l/min	138.6 l/min	138.5 l/min
System relief pressure for implement circuits	250 bar	250 bar	270 bar
Boom port relief base and rod end	290-290 bar	290-290 bar	310 bar
Auxiliary (AUX1) flow	78.2 l/min	80.5 l/min	85.7 l/min
Auxiliary (AUX2) flow	46.6 l/min	47.4 l/min	45.4 l/min
PERFORMANCE			
Digging force, dipperstick (ISO 6015)	22 171 N	30 993 N	33 472 N
Digging force, long dipperstick (ISO 6015)	-	26 301 N	28 405 N
Digging force, bucket (ISO 6015)	37 744 N	44 297 N	47 841 N
Travel speed, low range	2.8 km/h	2.9 km/h	2.9 km/h
Travel speed, high range	5.5 km/h	4.6 km/h	4.9 km/h
SLEW SYSTEM			
Boom swing, left	75°	75°	75°
Boom swing, right	50°	50°	50°
Slew rate	8.7 RPM	9.3 RPM	8.9 RPM
FLUID CAPACITIES			
Cooling system	7.6 l	7.6 l	9.5 l
Engine lubrication plus oil filter	6.3 l	6.3 l	9.8 l
Fuel reservoir	72 l	72 l	72 l
Hydraulic reservoir	15.1 l	15.1 l	15.1 l

* additional weight for long dipperstick including heavy counterweight

Certain specification(s) are based on engineering calculations and are not actual measurements. Specification(s) are provided for comparison purposes only and are subject to change without notice. Specification(s) for your individual Bobcat equipment will vary based on normal variations in design, manufacturing, operating conditions, and other factors. Pictures of Bobcat units may show other than standard equipment.

SPECIFICATIONS

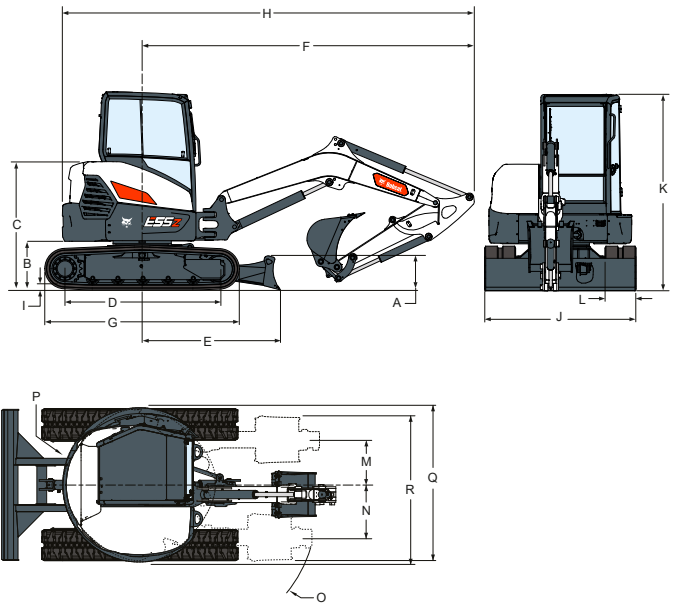
WORKING RANGE



WORKING RANGE			
	E50z	E55z	E60
A	186°	186°	186°
B	6 056	5 983	5 958
B*		6 361	6 336
C	5 922	5 843	5 822
C*		6 232	6 209
D	2 593	2 541	2 436
D*		2 638	2 533
E	370	390	390
F	502	547	547
G	4 195	4 273	4 390
H	5 499	5 513	5 630
H*		5 768	5 885
I	4 015	4 008	4 126
I*		4 263	4 381
J	2 462	2 485	2 561
J*		2 878	2 942
K	3 553	3 434	3 537
K*		3 834	3 937

Unit: mm
* long dipperstick

DIMENSIONS



DIMENSIONS			
	E50z	E55z	E60
A	373	422	422
B	608	627	637
B*		634	627
C	1 640	1 659	1 660
D	1 803	2 004	2 004
E	1 692	1 784	1 784
F	4 250	4 300	4 278
G	2 276	2 523	2 523
H	5 395	5 561	5 543
H*		5 558	5 541
H**			5 612
I	25	24	24
J	1 959	1 959	1 959
K	2 546	2 566	2 551
L	350	400	400
M	527	586	473
N	872	872	730
O	2 075	2 112	1 965
O*			2 053
P	1 035	1 000	1 265
P*		1 071	
P**			1 335
Q	2 016	1 976	2 243
Q*		2 046	
Q**			2 307
R	2 006	1 881	2 020
R*		2 035	
R**			2 066

Unit: mm
* long dipperstick
** long dipperstick & heavy counterweight

FINANCING OPTIONS

► 24, 36, 48, OR 60-MONTH FINANCING

Improve your cashflow by taking advantage of 24, 36, 48 or 60-month financing programs starting from 0% interest. Ask your dealer for the financing offers available.

150 ATTACHMENT FAMILIES 97 MACHINES 1 TOUGH ANIMAL



**LIGHT COMPACTION
EQUIPMENT**



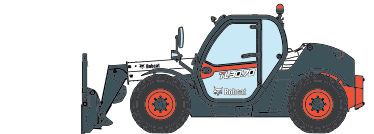
**MINI TRACK
LOADERS**



**SKID STEER
LOADERS**



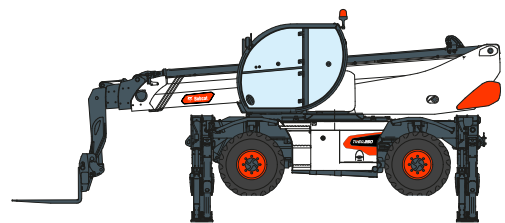
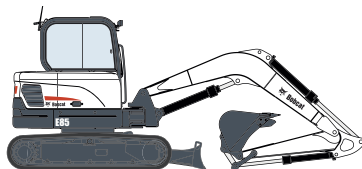
**COMPACT TRACK
LOADERS**



TELEHANDLERS



COMPACT EXCAVATORS



ROTARY TELESCOPIC HANDLERS



Bobcat®

Bobcat is a Doosan Company.

Doosan is a global leader in construction equipment, power & water solutions, engines, and engineering proudly serving customers and communities for more than a century. | Bobcat and the Bobcat logo are registered trademarks of Bobcat Company in the United States and various other countries.
©2021 Bobcat Company. All Rights Reserved.

*Financing options may vary by country and dealer. Always ask your dealer about currently available financing options. Terms and conditions may apply.



BE OM **EN OFFERT**

Klicka bara på **knappen** eller skanna **QR-koden** nedan för åtkomst till vårt offertformulär.

Vi kontakter dig så snart som möjligt. Tack!



BEGÄR OFFERT

